

Monitor Nozzles

Fog Nozzle Model 10000



SAFETY INDUSTRIES

Pty Limited

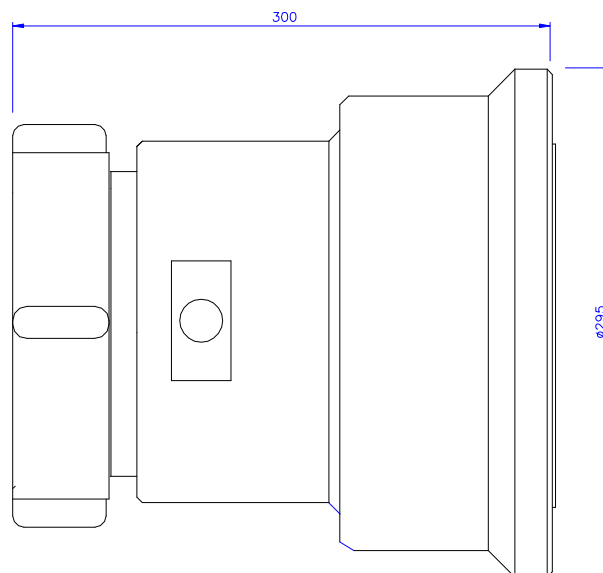
Description

The Model 10000 fog nozzle is a single flow fog nozzle that maintains essentially the same flow rate when adjusted from straight stream to wide fog. Nozzles can be supplied with customised flow rates. The data below is for two of many flow options.

The Model 10000 is a constant flow nozzle with a 150mm swivel base. The standard flow rates are 12,000 lpm, 16,000 lpm, 20,000 lpm & 24,000 lpm at 700 kPa.

Length: 300mm Diameter: 295mm Range (Straight Stream): >90M

The standard inlet connection is 6" NHT.



Materials of Construction

LG2 Gunmetal (Bronze) or hard anodized aluminium.
Seawater applications we recommend using nickel plated gunmetal construction for the longest trouble free service life.

Alternative Construction

Electroless nickel plated bronze

ORION SAFETY INDUSTRIES PTY LIMITED

A.C.N. 002 538 696

Tel (61) 2 9821 2244 29 SHEPHERD STREET LIVERPOOL NSW 2170 FAX (61) 2 9821 2906
AUSTRALIA

Performance Data

This data is for the furthest water drop in approximately still air conditions and with the nozzle mounted on a monitor aimed 30° above horizontal. This is the standard method of rating fog nozzles, however, even a slight cross or head wind will reduce the throw by about 5 meters and an allowance for this should be made when designing systems.

Flow Charts

11,355 lpm (3,000 US gpm) Stem

		STRAIGHT STREAM	WIDE FOG
PRESSURE	FLOW (lpm)	THROW (M)	THROW (M)
600 kPa	10,500	89	31
700 kPa	11,355	92	34
800 kPa	12,140	98	37
900 kPa	12,875	101	40
1000 kPa	13,570	104	43

16,000 lpm Stem

		STRAIGHT STREAM	WIDE FOG
PRESSURE	FLOW (lpm)	THROW (M)	THROW (M)
600 kPa	14,810	93	33
700 kPa	16,000	95	36
800 kPa	17,105	104	40
900 kPa	18,140	110	43
1000 kPa	19,120	115	45

20,000 lpm Stem

		STRAIGHT STREAM	WIDE FOG
PRESSURE	FLOW (lpm)	THROW (M)	THROW (M)
600 kPa	18,500	98	33
700 kPa	20,000	103	36
800 kPa	21,400	110	41
900 kPa	22,680	118	44
1000 kPa	23,900	125	47
1200 Kpa		133	52

ORION SAFETY INDUSTRIES PTY LIMITED

A.C.N. 002 538 696

Tel (61) 2 9821 2244 29 SHEPHERD STREET LIVERPOOL NSW 2170 FAX (61) 2 9821 2906
AUSTRALIA

24,000 lpm Stem

		STRAIGHT STREAM	WIDE FOG
PRESSURE	FLOW (lpm)	THROW (M)	THROW (M)
600 kPa	22,220	101	35
700 kPa	24,000	113	37
800 kPa	25,657	121	42
900 kPa	27,213	129	46
1000 kPa	28,685	138	49
1100 kPa	30,086	147	54
1200 kPa	31,423	155	58

ORION SAFETY INDUSTRIES PTY LIMITED

A.C.N. 002 538 696

Tel (61) 2 9821 2244 29 SHEPHERD STREET LIVERPOOL NSW 2170 FAX (61) 2 9821 2906
AUSTRALIA