

# Monitors

## Geared Manual Ranger Monitor



SAFETY INDUSTRIES  
Pty Limited



### Description

The Geared Monitors are ORION Ranger Model GM-XXX Monitors. These monitors have a 316 Stainless Steel waterway and swivel units made from aluminium bronze. Each swivel is moved by turning the handwheel.

### Specifications

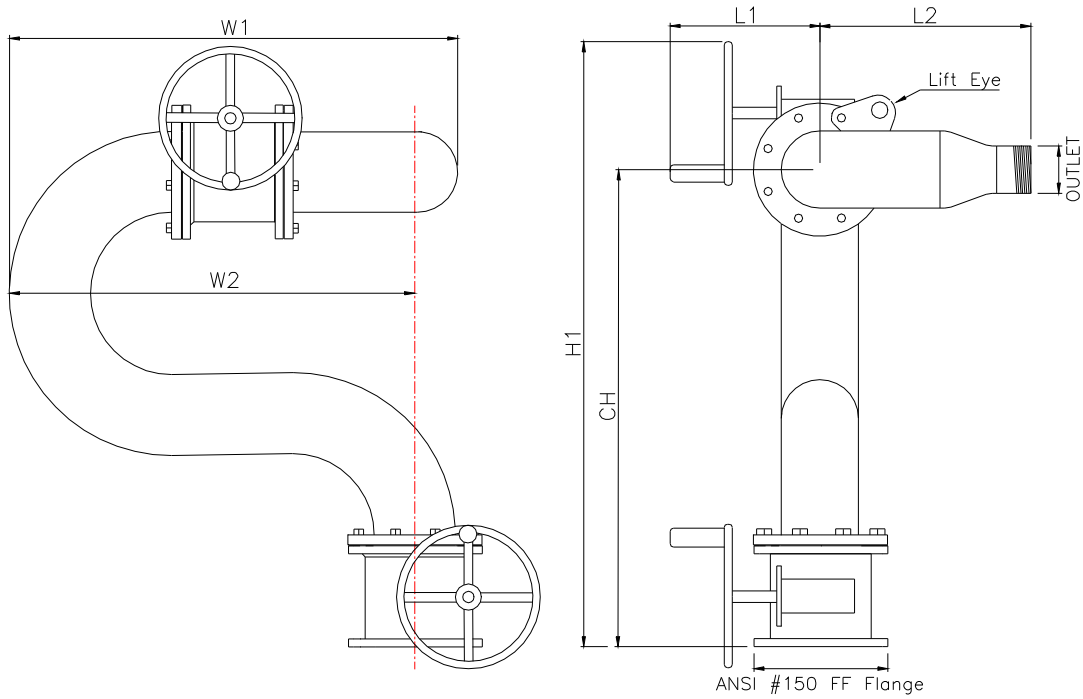
<b>Model No:</b>	<b>GM-100</b>	<b>GM-150</b>	<b>GM-200</b>	<b>GM-250</b>
Nominal Size:	100mm (4 inch)	150mm (6 inch)	200mm (8 inch)	250mm (10 inch)
Inlet Flange:	100mm ANSI 150# <b>Flat Faced</b>	150mm ANSI 150# <b>Flat Faced</b>	200mm ANSI 150# <b>Flat Faced</b>	250mm ANSI 150# <b>Flat Faced</b>
Flow Range (lpm):	>7,500	>16,000	>35,000	>55,000
Maximum Working Pressure:	1600 kPa			
Hydrostatic Pressure Test:	2500 kPa			

---

ORION SAFETY INDUSTRIES PTY LIMITED

A.C.N. 002 538 696

Tel (61) 2 9821 2244 29 SHEPHERD STREET LIVERPOOL NSW 2170 FAX (61) 2 9821 2906  
AUSTRALIA

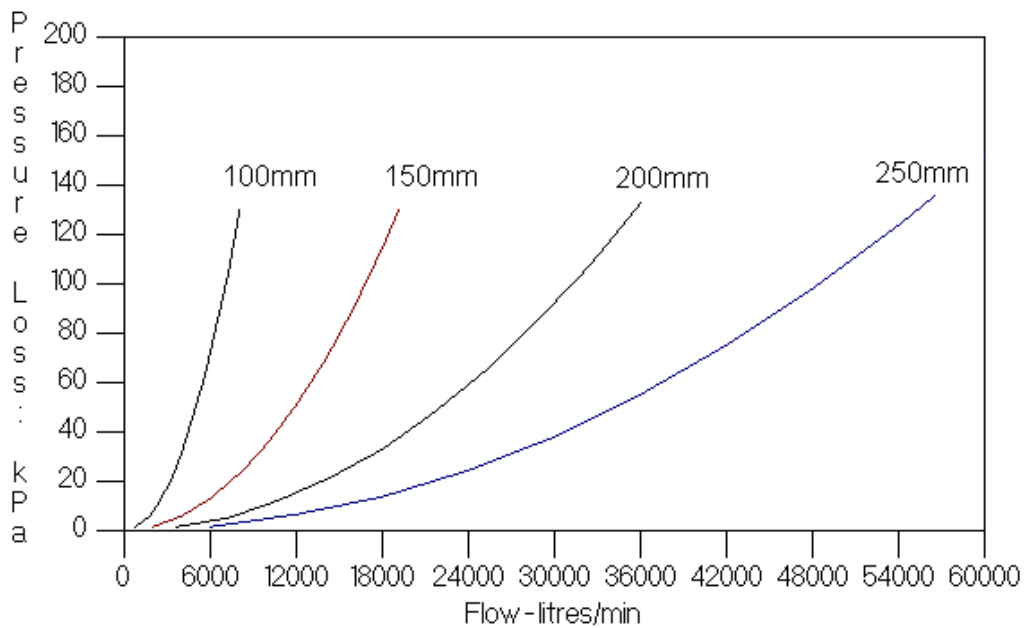


## Dimensions

	<b>GM-100</b>	<b>GM-150</b>	<b>GM-200</b>	<b>GM-250</b>
<b>W1</b>	650 mm	880 mm	1180 mm	1395 mm
<b>W2</b>	540 mm	740 mm	1010 mm	1190 mm
<b>H1</b>	888 mm	1010 mm	1380 mm	1650 mm
<b>CH</b>	720 mm	870 mm	1210 mm	1445 mm
<b>L1</b>	255 mm	300 mm	330 mm	370 mm
<b>L2</b>	160 mm	235 mm	315 mm	390 mm

## Performance Data

### Friction Loss Curve



**ORION SAFETY INDUSTRIES PTY LIMITED**

A.C.N. 002 538 696

Tel (61) 2 9821 2244 29 SHEPHERD STREET LIVERPOOL NSW 2170 FAX (61) 2 9821 2906  
AUSTRALIA